

PART OF THE NE. 1/4 OF SECTION 10 & THE S. 1/2 OF SECTION 3, T.6N., R.1E., S.L.B. & M.

189

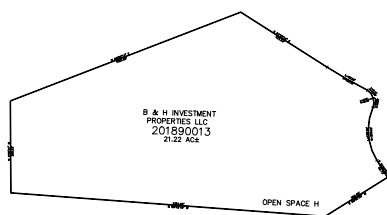
THE RESERVE AT CRIMSON RIDGE PHASE 2A

IN WEBER COUNTY

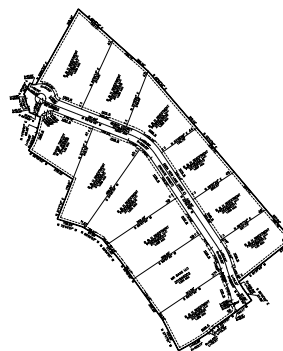
TAXING UNIT: 400

SCALE 1" = 400'

SEE PAGE 5



SEE PAGE 5



10' UTILITY & DRAINAGE EASEMENTS EACH
SIDE OF PROPERTY LINES AS INDICATED
BY DASHED LINES EXCEPT AS OTHERWISE
SHOWN.

FOR COMPLETE SURVEY DATA SEE
ORIGINAL DEDICATION PLAT IN
BOOK 93, PAGE 39-41 OF RECORDS.